

Serampore College

09, William Carey Road, Serampore, Hooghly, West Bengal, 712201

Faculty of Arts-Science-Commerce

NOTICE INVITING TENDER

Tender No.: SC-ASC/2022-23/93

Date: 24th February, 2023

Sealed quotations are invited mentioning for the following job(s)/materials for **Renovation work of the Toilet of Principal's Office**. The quotations are to be dropped into the assigned box in Bursar's Office on or before **03rd March, 2023, 12:00 noon** the quotations are to be opened at 1:00 P.M. in the Principal's Office on the 3rd March, 2023 (depends on the availability of the competent authorities). Interested legitimate parties are welcome to attend. All quotations should include taxes as applicable. Submission of photocopies of License, PAN Card and GST Certificate (if not a registered/enlisted vendor) of taxable entity is mandatory on the time of submission of quotations and bills. GST registered vendors will get preference in the selection process. This notice is also published on our website i.e., <https://seramporecollege.ac.in>.

N.B.: Concerned authority reserves the right to judge the merit of the quotations and decide accordingly for issuing the work order or rejecting the same.

Description of Work(s)/Product(s): -

Sl. No.	Description	Unit	Quantity	Rate Rs.	Amount Rs.
1	Dismantling all types of masonry excepting cement concrete plain or reinforced, stacking serviceable materials at site and removing rubbish as directed within a lead of 75 m.	Cu.M.	0.5	620	310
2	Dismantling all types of plain cement concrete works, stacking serviceable materials at site and removing rubbish as directed within a lead of 75 m.	Cu.M.	1	1240	1240
3	Removal of rubbish, earth etc. from the working site and disposal of the same beyond the compound, in conformity with the Municipal / Corporation Rules for such disposal, loading into truck and cleaning the site in all respect as per direction of Engineer in charge	Cu.M.	1.5	210	315
4	75 mm. thick brick work with 1st class bricks in cement mortar (1:3)	Sq.m.	2	1000	2000



	<p>Supplying and laying true to line and level vitrified tiles of approved brand (size not less than 600 mm X 600 mm X 10 mm thick) in floor, skirting etc. set in 20 mm sand cement mortar (1:4) and 2 mm thick cement slurry back side of tiles using cement @ 2.91Kg./sqM or using polymerised adhesive (6 mm thick layer applied directly over finished artificial stone floor/Mosaic etc without any backing course) laid after application slurry using 1.75 Kg of cement per sqM below mortar only, joints grouted with admixture of hite cement and colouring pigment to match with colour of tiles / epoxy grout materials of approved make as directed and removal of wax coating of top surface of tiles with warm water and polishing the tiles using soft and dry cloth upto mirror finish complete including the cost of materials, labour and all ther incidental charges complete true to the manufacturer's specification and direction of Engineer-in-Charge. (White cement, synthetic adhesive and grout material to be supplied by the contrr]e) With Polymerised Adhesive [6 mm thick] & epoxy grouting materials for filling joints including spacer-2 mm [Applied directly over finished artificial stone floor/ mosaic etc.] Deep Colour & White</p>	Sq.m.	24	2240	53760
--	--	-------	----	------	-------

Sl. No.	Description	Unit	Quantity	Rate Rs.	Amount Rs.
6	<p>Supplying, fitting & fixing granite slabs 20 mm to 25 mm. thick with uniform texture & without decorative veins in columns, wall, facia, rise etc. with 15 mm thick [avg] cement mortar (1:2) including making suitable arrangements to hold the stones properly by brass / copper hooks including pointing in cement mortar (1:2) (1 white cement : 2 marble dust) with admixture of pigment matching the stone shades all complete as per direction of the Engineer-in-charge including cost of all materials, labours, scaffolding, staging, curing and roughening of concrete surface complete. [Using cement slurry at back side of granite @ 4.4 kg/sq.m & white cement slurry for joint filling @ 1.8 kg/sq.m] (b) Area of each Granite slab above 1.00 Square meter.</p>	Sq.m.	0.7	4750	3325
7	<p>Labour for taking out door and window frame including shutter for repair or replacement of different parts of the frame & refixing the same including mending good all damaes complete.</p>	Sq.m.	1.6	185	296
8	<p>Taking out shutter of door and window, dismantling by parts (for repair or replacement of damaged parts) , reassembling and refitting and rehangng same with old fittings but with new screws as necessary. (Where different parts of same shutter are renewed under different item, payment under item 73 will be made once only).</p>	Sq.m.	1.6	160	256
9	<p>Plaster (to wall, floor, ceiling etc.) with sand and cement mortar including rounding off or chamfering corners as directed and raking out joints including throating, nosing and drip course, scaffolding/staging where necessary With 1:3 cement mortar 15 mm. thick plaster</p>	Sq.M	10	220	2200
10	<p>Acrylic Distemper to interior wall, ceiling with a coat of solvent based interior grade acrylic primer (as per manufacturer's specification) including cleaning and smoothing of surface. Two Coats</p>	Sq.M	30	87.5	2625



Sl. No.	Description	Unit	Quantity	Rate Rs.	Amount Rs.
11	Removing old scales, blisters etc. of interior surface of walls, ceiling by scraping etc. and preparing smooth and even surface with rendering or cement mortar (1:2) (as necessary), to make the surface suitable for receiving distemper. (Payment against this item will be made only when this has been done on the specific direction of the engineer-in-charge).	%Sq.M	30	1270	381
12	Rendering the Surface of walls and ceiling with White Cement base WATER PROOF wall putty of approved make & brand.(1.5 mm thick)	Sq.M	20	155	3100
13	(a) Priming one coat on steel or other metal surface with synthetic oil bound primer of approved quality including smoothening surfaces by sand papering etc.	Sq.m	2	40	80
14	(b) Priming one coat on timber or plastered surface with synthetic oil bound primer of approved quality including smoothening surfaces by sand papering etc	Sq.m	4.5	50	225
15	Painting with best quality synthetic enamel paint of approved make and brand including smoothening surface by sand papering etc. including using of approved putty etc. n the surface, if necessary				
	On timber or plastered surface : With super gloss (hi-gloss) Two coats (with any shade except white)	Sq.M	4.5	100	450
	On steel or other metal surface : Two coats (with any shade except white)	Sq.M	2	100	200
16	Removing loose scales, blisters etc. from old painted surface and thoroughly smoothening the surface to make the same suitable for receiving fresh coat of paint	Sq.M	6.5	30	195
17	Supplying fitting & fixing wash basin white vitreous china best quality approved make wash basin (Hindware/Hindusthan/Parryware/Cera or similar brand) with C.I. brackets on 75 mm X 75 mm wooden blocks, C.P. waste fittings of 32 mm dia., one approved quality brass C.P. pillar cock of 15 mm dia., C.P. chain with rubber plug of 30 mm dia., approved quality P.V.C. waste pipe with C.P. nut 32 mm dia., 900 mm long approved quality P.V.C. connection pipe with heavy brass C.P. nut including mending good all damages and painting the brackets with two coats of approved paint. (iii) 630 mm X 450 mm size	Each	1	5040	5040
18	Supplying fitting & fixing approved brand 32 mm dia.P.V.C. waste pipe, with PVC coupling at one end fitted with necessary clamps. (iii) 900 mm long	Each	1	120	120

Sl. No.	Description	Unit	Quantity	Rate Rs.	Amount Rs.
19	Supplying fitting & fixing Chromium plated stop cock / bib cock 20 mm dia. (d) (ii) Chromium plated concealed Stop Cock heavy duty (Equivalent to Code No. 5083 & Model - Florentine of Jaquar or similar brand).	Each	3	1240	3720
20	Supplying fitting & fixing flat back urinal (Hindware/Hindusthan/Parryware/Cera or similar brand) (half stall urinal) in white vitreous chinaware of approved make in position with brass screws on 75 mm X 75 mm X 75 mm wooden blocks complete. (ii) 465mmx355mmx285mm	Each	1	1500	1500



21	Supplying fitting & fixing E.W.C.(Hindware/Hindusthan/Parryware/Cera or similar brand) in white glazed vitreous chinaware of approved make complete in position with necessary bolts, nuts etc. (B) With 'S' trap	Each	1	5500	5500
22	Supplying, fitting and fixing 10 litre porcelain low-down cistern of approved make with either side or bottom inlet, side overflow, brackets complete with all internal PVC fittings. White	Each	1	2990	2990
23	Supplying, fitting and fixing Closet seat of approved make with lid and C.P. hinges, rubber buffer and brass screws complete. (a) E.W.C. (iv) Bestolite (solid type) white	Each	1	930	930
24	Supplying fitting & fixing' best quality Indian mirror 5.5 mm thk with silvering as per I.S.I. specifications supported on fibre glass frame of any colour, frame size 900 mm X 600 mm	Each	1	2080	2080
25	Supplying, fitting and fixing liquid soap container. (a) Cromium plated	Each	1	510	510
26	Supplying, fitting and fixing towel rail with two brackets. (a) C.P. over brass (iii) 25 mm dia. and 750 mm long	Each	1	620	620
27	Supplying, fitting and fixing porcelain toilet paper holder of approved make with wooden spindle as necessary. (iii) Recess roll type size 150 mm X 150 mm	Each	1	500	500
28	Supplying, fitting and fixing 32 mm dia. Flush Pipe of approved make with necessary fixing materials and clamps complete. ii) C. P. Flush Pipe	Each	1	380	380
29	Hand Shower(Health Faucet) with 1mtr Fexible Tube with Wall Hook(Equivalent to Code No.573 & Model -ALLIED of Jaquar or similar).	Each	1	2000	2000
30	Supplying best Indian sheet glass panes set in putty and fitted and fixed with nails and putty complete. (In all floors for internal wall & upto 6 m height for external wall) (ii) 4 mm thick	Sq.M	1	700	700

COST OF CIVIL, SANITARY AND PLUMBING WORK 97548

CGST + SGST@18% 17,558.64

Cost of civil works excluding labour welfare cess 115106.64

LABOUR WELFARE CESS@1% 1151.07

Cost of civil works including labour welfare cess 116257.71

Electrical work L.S. 5000


TOTAL PROJECT COST 121257.71 (Say 1,21,258)

Rs. One Lacs Twenty-One Thousand Two Hundred and Fifty-eight Only



N.B.:

1. It is mandatory to mention the business's name on the envelope along with the tender number at the time of submission of quotations.
2. Only those with License (Specific) in relevant field are eligible to participate in the tendering process.
3. Total amount for the work should be quoted.
4. Vendors can survey the work (if required) before submission of quotations. They may contact Mr. Shouvik Sarkar (Mobile No.: - 9163638654), Campus Supervisor, Serampore College in this regard.

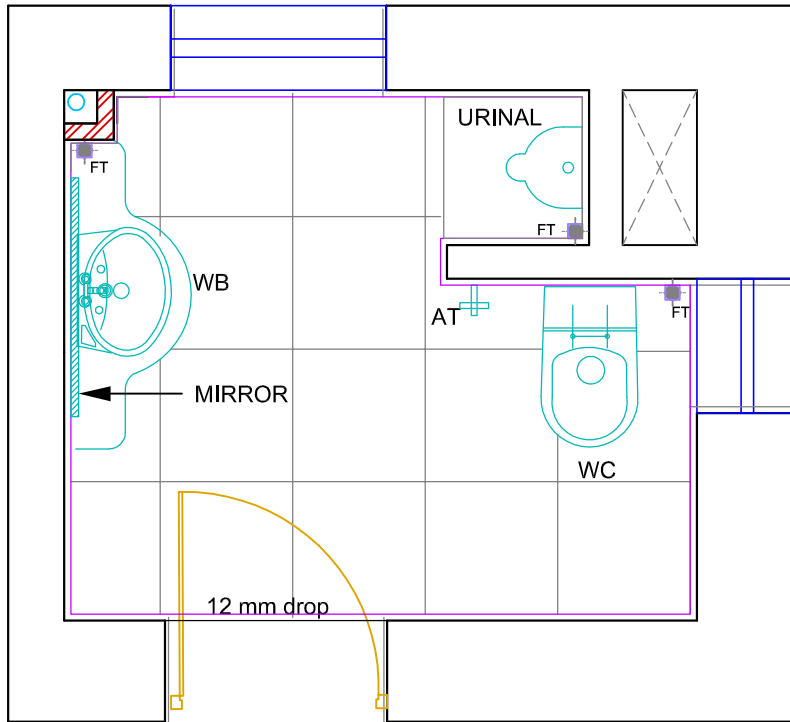

Mr. Jishnu Dasgupta
Bursar (ASC)

Bursar (ASC)
Serampore College
Serampore, Hooghly
West Bengal - 712201


Dr. Bidyut Banerjee
Vice-Principal

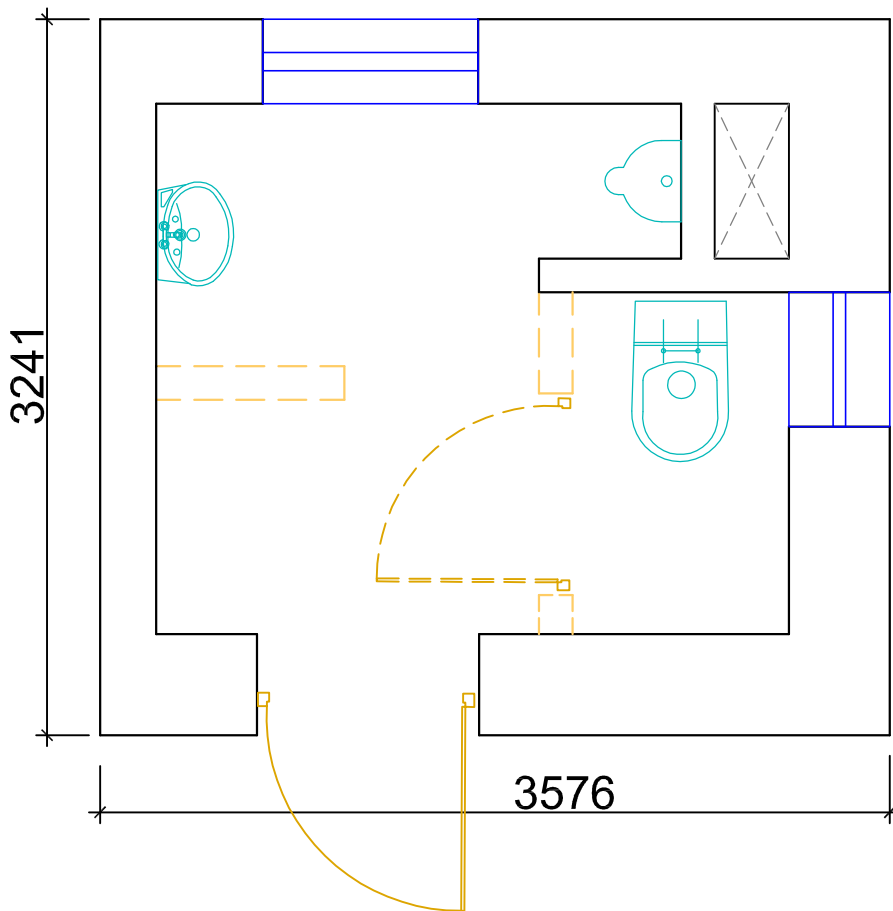
Vice-Principal (ASC)
Serampore College
Serampore, Hooghly
West Bengal - 712201





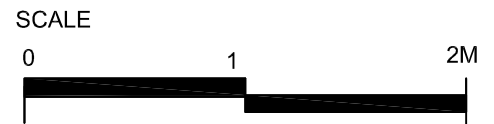
ABBREVIATION	
1.	WC WALL MOUNTING WATER CLOSET SET WITH CONCEALED CISTERN
2.	WB WASH BASIN
3.	AT ABULATION TAP
4.	FT FLOOR TRAP

PRINCIPAL'S TOILET- PROPOSED LAYOUT



LEGEND	
	EXISTING WALL TO BE DEMOLISHED
	EXISTING DOOR TO BE DEMOLISHED

PRINCIPAL'S TOILET EXISTING CONDITION



TOILET LAYOUT FOR PRINCIPAL
OFFICE AT GEORGE HOWELL BUILDING
AT SERAMPORE COLLEGE

DRAWN TRIPTI
DATE 14.02.2023
SCALE AS_SHOWN
APPROVED G.SEN



The Designers
ARCHITECTS • CONSERVATION ARCHITECTS
ENGINEERS • INTERIOR DESIGNERS
539A BLOCK-N • NEW ALIPORE • KOLKATA-53

DWG. NO. SER/2022/Colg_Admin/TOI-01 REV.-0


Serampore College

09, William Carey Road, Serampore, Hooghly, West Bengal, 712201


Faculty of Arts-Science-Commerce

* TERMS & CONDITIONS:

1. The rate should be quoted both in figure and words. The rate should be inclusive of all taxes and incidental charges. Only one quotation paper will be accepted from each contractor.
2. Before dropping, those intending to submit quotations are requested to inspect the site. No extra charges will be entertained after accepting the quotation. No conditional quotation will be entertained.
3. The payment will be made after successful completion of work subject to availability of fund.
4. Acceptance of lowest quotation is not obligatory and the undersigned reserves the right to accept/reject any or all the quotation/s received at his discretion without assigning any reason whatsoever at any stage.
5. The successful contractor must complete the work within 30 days unless otherwise mentioned. No extension of time will be allowed except in special case. If any contractor fails to complete the work within the stipulated time, the work order issued in his favour will be cancelled without assigning any reason thereof. The undersigned may also proceed to get the balance work completed by any other means including through other contractors. The excess expenditure, if any, due to such a step would be recoverable from the unpaid bills, security deposit of the contractors/vendors. This is apart from any other protective measure. The undersigned may take including black listing of the contractors and forfeiture of earnest money.
6. All works will have to be done according to the specification, design and details approved by the Building Committee concerned and as per directions of the Principal, Serampore College.
7. The successful contractor/vendor will have to abide by the provisions of the West Bengal Contract Labour (Regulation & Abolition), Rules, 1972 as will be in force from time to time.
8. The contractor/vendor who does not fulfil any or all of the above noted conditions and submit incomplete quotation, the same will be summarily rejected. The quotation notice will form a part of agreement.
9. All terms and conditions will be followed by PWD rules and norms. Any other information of such relevant matter not included in the notice may be gathered from the office of the undersign in any working days during office hours prior to date of opening of this quotation.
10. Those who have GST Registration will have to submit GST inclusive Quotations and GST Bills (Regular GST or Composite GST as applicable). The taxes and government duties as applicable will be deducted from the bill of the contractor.
11. Quotations will be accepted sent by Post only duly received by the College Administration.
12. Materials: All materials required for the works, if supplied by the contractor should be of the best quality & ISI Marked then approved by college authority.
13. Labour, tools, plants etc.: The contractor shall supply all tools, plants and labour required for carrying out the Work.
14. No damage should be caused to any other college property while the work is done. If any damage is caused, then you will be liable to restore it to its original shape.


Mr. Jishnu Dasgupta
Bursar (ASC)
Bursar (ASC)
Serampore College
Serampore, Hooghly
West Bengal - 712201




Dr. Bidyut Banerjee
Vice-Principal
Vice-Principal (ASC)
Serampore College
Serampore, Hooghly
West Bengal - 712201